

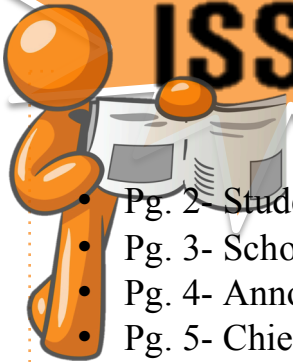
# THE 411 Newsletter

American Samoa  
Community College



FALL 2015

## • IN THIS • ISSUE



- Pg. 2- Student Services
- Pg. 3- Scholarships
- Pg. 4- Announcements
- Pg. 5- Chiefs Chatterbox
- Pg. 6- TV Show Reviews
- Pg. 8- Think About It
- Pg. 10- Chief of the Week
- Pg. 11- Chief Staff of the Week

“

Use your imagination  
not to scare yourself to death but to  
inspire yourself to life.



- Adele Brookman

”

## MAKE AN ANNOUNCEMENT ON 411

If you would like to make announcements via the 411 Campus Newsletter, please see Katrina Garcia at the S.L.A. Center, or you can email: [k.garcia@amsamoa.edu](mailto:k.garcia@amsamoa.edu) or [ascc411newsletter@gmail.com](mailto:ascc411newsletter@gmail.com). Or you can call 699-9155 ext. 479.



FRESH PRINT

Fresh Print is ASCC's journalism club. They are in charge of putting together the 411 Newsletter. If you have any questions or would like to join the club, email [k.garcia@amsamoa.edu](mailto:k.garcia@amsamoa.edu)

PUT THIS  
on YOUR  
CALENDAR!

- 9/8 – 10/16 Withdrawal Period to Receive a “W”
- 10/5 – 10/8 Midterm Examinations
- 10/9 Early Add/Drop CAPP Second Session
- 10/12 Holiday – Columbus Day
- 10/19 – 11/6 Withdrawal Period to Receive a “W/F” or “W/NP”
- 11/11 Holiday – Thanksgiving



October 12 – 22, 2015

# Division of Student Services

*"We here at Student Services are dedicated to providing each student with high quality services and assistance in all of our respective areas."*

Come visit an Academic, Personal, Career, Outreach, Veterans Affairs or Transfer/Transition Counselor. Student Service counselors have their offices located by the cafeteria.



**Need some guidance? Go see a**



## Counselor Contact

Feel free to stop by and get help from your Counselors

Contact Annie Panama 699-9155, ext. 326 or email [a.panama@amsamo.edu](mailto:a.panama@amsamo.edu) for your counselor questions.

## Veterans Student Services Corner



For information concerning students with VA benefits. Please see or contact Lydian Tinitali, 699-9155 ext. 426 or email [ascevastudentservices@amsamo.edu](mailto:ascevastudentservices@amsamo.edu)

## S.L.A<sup>+</sup> Center

If you need tutorial sessions, stop by the Student Learning Assistance Center for English & Math.

Call us at 699-9155 ext. 479, to set an appointment or just walk in.

Email us at [slastaff@amsamo.edu](mailto:slastaff@amsamo.edu).

We have one-on-one and group tutoring. If a teacher refers you to the Center, you must have a referral form.

For staff and peer tutor schedules, inquire at the SLA Center.

## STUDENT SERVICES RELOCATION NOTICE:

Please note that effective, October 1, 2015, the relocation of the following Student Services offices:

- **Admissions** - The Admissions Office has now been relocated to the old ASTEP office;
- **Financial Aid** -The Federal Work Study program counselor (Thomas) has relocated to the old Admission Officer's office;
- **Student Learning Assistance (SLA) Annex Office**– The old SLA Annex office has now been relocated to the old SSS Lab/Office;
- **Career Transfer Center (CTC)** – The old SLA Annex office is now the new CTC (Career Counselor Gloria Iaulualo and Transfer Counselor Matesina Willis)



The Asian & Pacific Islander American Scholarship Fund has a new scholarship opportunity for American Samoa Community College. Awards range from \$2,500 - \$5,000. For more information or to apply, visit <http://www.apiasf.org/aanapiasischolarship.html>. The deadline to apply is October 15, 2015 at 9 PM EST.

The Make It Move Scholarship will award one winner a \$1000 scholarship to use towards funding their academic career. The Make It Move Scholarship is open to U.S. citizens and

## Make It Move Scholarship

international students enrolled in high school or an undergraduate/graduate program at an accredited U.S. institution. Visit [www.applied-motion.com/makeitmove](http://www.applied-motion.com/makeitmove) for more information.

### How to Apply

To apply, you need to do four things:

1. Take your great idea, and turn it into an actual moving creation.
2. Film your final creation in action using Instagram.
3. Include a short description about your creation.
4. Upload it to Instagram including the hashtag #ampmakeitmove.

### Important Dates and Deadlines

All projects will need to be fully uploaded to Instagram with the hashtag no later than the final deadline of October 16, 2015 in order to be considered for the scholarship. No other additional documents or forms (letters of recommendation, etc.) are required for submission.



## Thumbtack School-To-Skills Scholarship

**Award: \$5,000**

**Application Link: [thumbtack.com/scholarship/](http://thumbtack.com/scholarship/)**  
**Deadline: Sunday, January 31, 2016**



The scholarship will be awarded to an individual who demonstrates this commitment by chasing their passion to learn a new trade that they can turn into a business, learning fundamental business skills such as marketing and accounting, or deepening their knowledge and capabilities to improve public policy and foster an environment that better serves small business owners and independent professionals.

## SCHOLARSHIPS FOR COMMUNITY COLLEGE GRADUATES



The Community College Graduate Scholarship is available to community college students with demonstrated financial need who have earned their associate's degrees and seek to complete their bachelor's degrees at one of our four-year Partner Colleges. **Students who are currently enrolled in a bachelor's degree program are not eligible.** Scholars are selected from a nationwide pool of applicants.

**Link to apply:** <http://www.thedream.us/scholars/>

**Deadline:** February 15, 2016

WANT A  
CAREER THAT'S



## NASA CAREER OPPORTUNITIES

NASA is embarking on important missions, both on Earth and beyond, and we're looking for fresh ideas to help us get there. Join us and develop job skills that can take you further than you can imagine.

Visit [www.nasajobs.nasa.gov](http://www.nasajobs.nasa.gov) for the details!



I • M • P • O • R • T • A • N • T

Announcements

### Stay tuned for Student Government Association Events!

Calendar of events include intramural sports, talent shows, scavenger hunts, costume competitions!  
Participate to win monetary prizes or watch and enjoy the show.

### Financial Aid Announcement

- Batch 1 was released on October 1<sup>st</sup>, 2015 and will be ongoing for the following three weeks.
- Turn in all required documents and Verification worksheets in order to be batched for this semester.
- **ONLY FOUR** batches for this fall 2015 semester. All batching will end mid-November.

### HOSA – Future Health Professionals Meeting

There will be a HOSA meeting on October 13, 2015 at 7:30 AM in Room A-30. All ASCC students are welcome to attend. Find out more about HOSA – Future Health Professionals at [www.hosa.org](http://www.hosa.org).



See more photos of SGA events on ASCC 411 Newsletter's Facebook page!



# ASCC Tutorial Directory

Divisions/Departments /Special Projects	Subjects	Time	Location	Contact
<b>Division of Student Services</b>	All Subject Courses; CAPP, English, Math, All other courses	Daily 8:00am-3:30pm	Student Learning Assistance (SLA) Center/Annex	<b>Tala Ropeti Leo</b> (SLA Center) 699-9155 ext. 461 <a href="mailto:t.leo@amsamoa.edu">t.leo@amsamoa.edu</a> <b>Katrina Garcia</b> (SLA Center) 699-9155 ext. 479 <a href="mailto:k.garcia@amsamoa.edu">k.garcia@amsamoa.edu</a> <b>Isaako Amosa</b> (SLA Annex) 699-9155 ext. 423 <a href="mailto:i.amosa@amsamoa.edu">i.amosa@amsamoa.edu</a> <b>Jamrul Tofilau</b> (SLA Annex) 699-9155 ext. 423 <a href="mailto:j.tofilau@amsamoa.edu">j.tofilau@amsamoa.edu</a>
<b>Business Department</b>	Accounting, Financial Math, Technology	See Instructors Office hours	Instructor's Offices	<b>Ioapo Tauai</b> 699-9155 ext. 382 <a href="mailto:papa_tauai@yahoo.com">papa_tauai@yahoo.com</a>
<b>Community &amp; Natural Resources</b>	CNR Courses	See Instructors Office hours	CNR Building/Instructor's Offices	<b>Pauline McFall</b> 699-2550 ext. 280 <a href="mailto:ptmcfall@gmail.com">ptmcfall@gmail.com</a> <b>Dr. Otto Hansel</b> 699-1575 ext 230 <a href="mailto:o.hansel@amsamoa.edu">o.hansel@amsamoa.edu</a> or <a href="mailto:leonesci@yahoo.com">leonesci@yahoo.com</a>
<b>Criminal Justice</b>	Criminal Justice Courses	See Instructors Office hours	Instructor's Offices	<b>Rosie A. Toeava</b> 699-9155 ext. 332 <a href="mailto:r.ahchee@amsamoa.edu">r.ahchee@amsamoa.edu</a>
<b>Fine Arts Department</b>	Drawing; Designing; Painting; Photography; Pottery MUS161; MUS153; MUS296&L; MUS160	Scheduled by appointment	Instructor's Offices	<b>Kuki Tuiasosopo</b> 699-9155 ext. 329 <a href="mailto:k.tuiasosopo@amsamoa.edu">k.tuiasosopo@amsamoa.edu</a> <b>Regina Meredith</b> 699-9155 ext. 360 <a href="mailto:r.meredith@amsamoa.edu">r.meredith@amsamoa.edu</a> <b>Poe Mageo</b> 699-9155 ext. 329 <a href="mailto:p.mageo@amsamoa.edu">p.mageo@amsamoa.edu</a>
<b>Language and Literature Department</b>	Writing; Reading; Interpretation; Research	Daily/Office Hours	Instructor's Offices	<b>Mele Fiaui</b> 699-9155 ext. 306 <a href="mailto:m.fiaui@amsamoa.edu">m.fiaui@amsamoa.edu</a>
<b>Math and Science Department (LSAMP Program)</b>	LSAMP Related Tutorials	Daily/Schedule by appointment	Chemistry Lab	<b>Victor Ualesi</b> 699-9155 ext. 350 <a href="mailto:v.ualesi@gmail.com">v.ualesi@gmail.com</a>
<b>Nursing Department</b>	All nursing related tutorials	Daily 8am - 4pm	M4	<b>Lele Ah Mu</b> 699-1586 <a href="mailto:leleahmu@ymail.com">leleahmu@ymail.com</a>
<b>Samoan Studies Department</b>	All Samoan Courses	Office Hours Scheduled by appointment	SSI	<b>Okenaisa Fauolo</b> 699-9155 ext. 347 <a href="mailto:o.fauolo@amsamoa.edu">o.fauolo@amsamoa.edu</a>
<b>Social Science</b>	Social Science Courses	See Instructors Office hours	Instructor's Offices	<b>To'aiva F. Tago</b> 699-9155 ext. 364 <a href="mailto:t.fiametago@amsamoa.edu">t.fiametago@amsamoa.edu</a>
<b>Teacher Education Department</b>	Teacher Education related courses	TBA	TED Office	<b>Dr. Lina Galea'i-Scanlan</b> 699-9155 ext 385 <a href="mailto:l.galeai-scanlan@amsamoa.edu">l.galeai-scanlan@amsamoa.edu</a>
<b>Trades &amp; Technology Division</b>	TTD Related Tutorials	Daily/Office Hours	TTD Classrooms	<b>Michael Leau</b> 699-9155 ext. 369 <a href="mailto:m.leau@amsamoa.edu">m.leau@amsamoa.edu</a> <b>Fred Suisala</b> 699-9155 ext. 353 <a href="mailto:f.suisala@amsamoa.edu">f.suisala@amsamoa.edu</a>



The first “Mr. & Miss Chief” of the American Samoa Community College (ASCC) are Mr. Iosefo Lotolelei Sio and Miss. Gwen Fuimaono. They were recognized by their peers for their superior skills in Samoan traditional tasks. The competition included traditional tasks such as weaving baskets, husking coconuts and making coconut milk. [photo: ASCC Journalism Club]



*Tauvaga Tusiga Tala*

**Ask your Samoan Studies Teacher for a Rubric today and begin writing!**

- 1 entry per person
- Story must be written in Samoan
- 3 page minimum
- Submissions must be typed (size 12 font)
- Turn your stories in to Tamari Mulitalo-Cheung

All stories must be submitted no later than:  
*Thursday, October, 15, 2015*

*prizes*

1st Place	\$100
2nd Place	\$75
3rd Place	\$50

- All stories must include the following 5 WORDS:
- Ofu fa'aipoipo
- Samala
- Kolisi
- Pua'a

AMERICAN SAMOA COMMUNITY COLLEGE  
Fine Arts Department  
Presents

# Jazz



## Week Festival 2015

Join the festivities and let us celebrate music on campus

Monday, October 19 - Jazz Lecture & Demonstration/ 12:00 Noon Lecture Hall

Tuesday, October 20 - Jazz Outdoor Gig/ 12:30 Amphitheater

Wednesday, October 21 - Jazz Indoor Gig/ 12:00 Noon Lecture Hall

Thursday, October 22 - Featured Band "The Opeloga Ah Sam Quintet from New Zealand/  
12:30 Amphitheater

Friday, October 23 - Samoan Ethnomusicology Forum "The Sounds of Samoana"/ 8:00 Lecture Hall

**FREE ADMISSION**

PosterMyWall.com

Background by iStock © pan Stock

## Sounds of Samoana

### Ethnomusicology Forum

Dr. Richard Moyle  
Keynote Speaker

Friday, October 23, 2015

8:00 a.m. to 3:30 p.m.

American Samoa Community College  
Lecture Hall

Samoana e, fa'afogofogo, a e sa'i lagi atu o lau pese, fa'anoanoa i le uso pele  
o lo'u ua malaga atu i nu'u ese. Jo motou fa'afasi, ma fa'ao ai  
Se mea a lelei o uso fa'atofani. A e ui i lea  
Tutu pea i le tama  
Ma lona alofa o le a maua ai se maua



An Event of the  
ASCC Fine Arts  
Department  
In Collaboration with the  
Samoana Jazz & Arts  
Festival

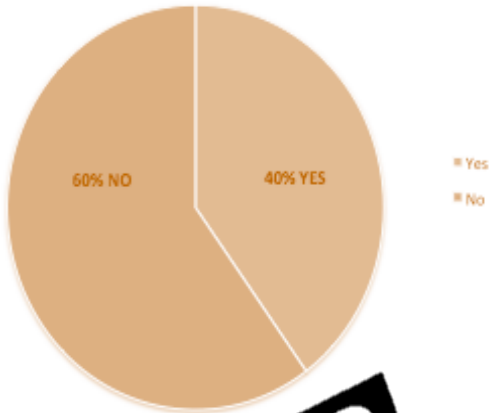




# ASCC POLLS

By: Ariella O'Brian

Would you ever do "The Charlie Charlie challenge" on halloween?" by Ariella O'Brien



40% of individuals who responded "yes" as regards to "The Charlie Charlie challenge" said it may possibly be merriment to discourse with a spirit during Halloween, and just to frighten off their friends.

60% of individuals who responded "no" said it is excessively menacing because they believe the spirit will swiftly emerge in front of them; in addition, it's exceedingly hazardous to have any type of paranormal activity happening in their own home or whichever area they are in.

## DO'S &

## DON'TS ON

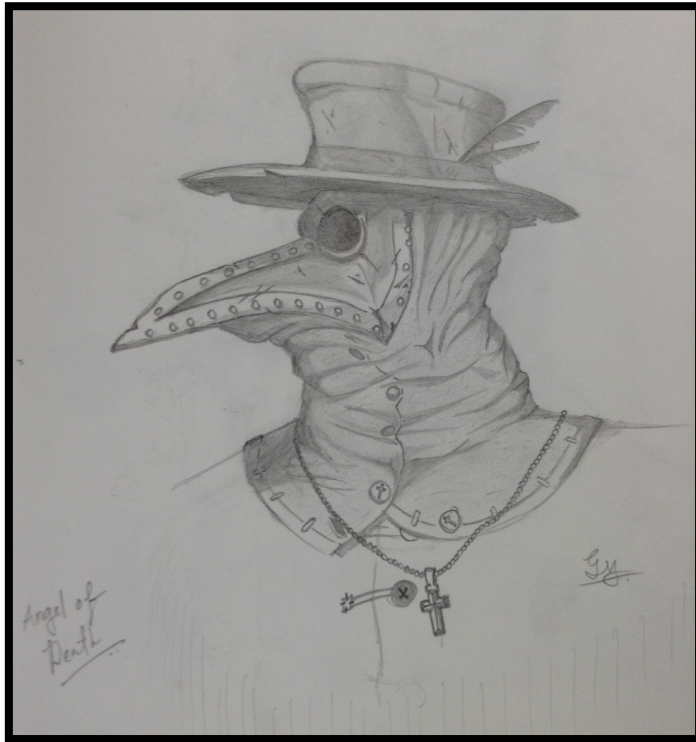
# HALLOWEEN

By: Fruity Fruit

- DO: go trick or treating with your friends even if you are over 12.
- DON'T: give out extra candy to someone else's absent sibling, boyfriend/girlfriend, mother-in-law, or friend!
- DO: trick or treat at the same house if the candy bars are legit.
- DON'T: dress like the Pixar lamp, that is just weird.
- DO: serve eyeball cupcakes, pumpkin cheesecake bars, or monster s'mores.
- DON'T: dress yourself as Miley Cyrus on Halloween, that is just lazy and predictable.
- DO: be creative and original this year.
- DON'T: give out Halloween cards if you're out of candies. Just don't!
- DO: give out tootsie rolls, dots, strawberry hard candies, or jelly beans if you're on a tight budget.
- DON'T: on second thoughts, trick or treat if you're over 12.
- DO: have a lot of fun working on a DIY costume this year. If you can't decide who to pretend to be on Halloween, watch some of the classic films like "Coraline," "Beetlejuice," or my all time favorite - "Hocus Pocus".
- DO: have a Happy Halloween.



# EXPRESS YOURSELF



## Treating Trickers

By Dolan Grey

Candy is Dandy  
But liquor is quicker  
Poison is served  
Death is delivered.  
Careful who you're greeting  
Aware of whom you're treating  
They who receive may be tricking  
You'll be a victim of their picking.

## Three Scary Games to Play this Halloween

1.



2.



3.



It's as much  
fun to scare  
as to be  
scared.

*Vincent Price*



[www.MarketingArtfully.com](http://www.MarketingArtfully.com)



# CHIEF

# of the WEEK

## George Mose

**Village:** Afao

**Age:** 25

**Major:**

Education

**Club:** Lumana'i

Educators

Association



### Favorites:

**Movie:** The Vow

**TV Show:** Smallville

**Food:** Falai Pilikaki

**Book:** Bible

**Video Game:** Mortal Kombat

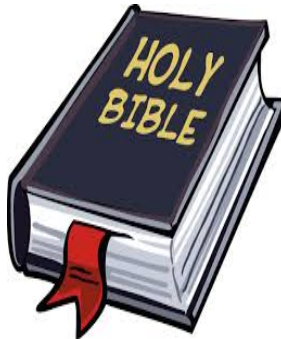
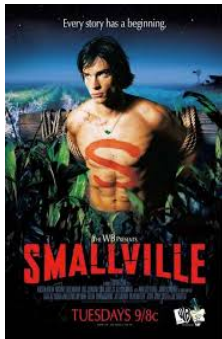
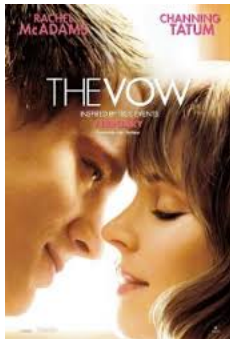
**Sport:** Basket Ball

**App:** Instagram

**Junk Food:** Tim Tams

**Subject:** Science

**Singer:** Chris Brown



**What is something interesting about you?**

I love to bake.

**What do you like to do outside of school?**

Making Smoothies at Mochetta's Restaurant.

**Where do you see yourself five years from now?**

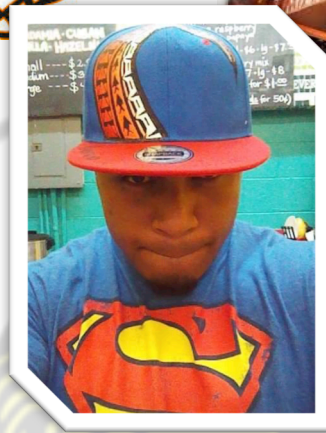
Teaching at an elementary school and very happy.

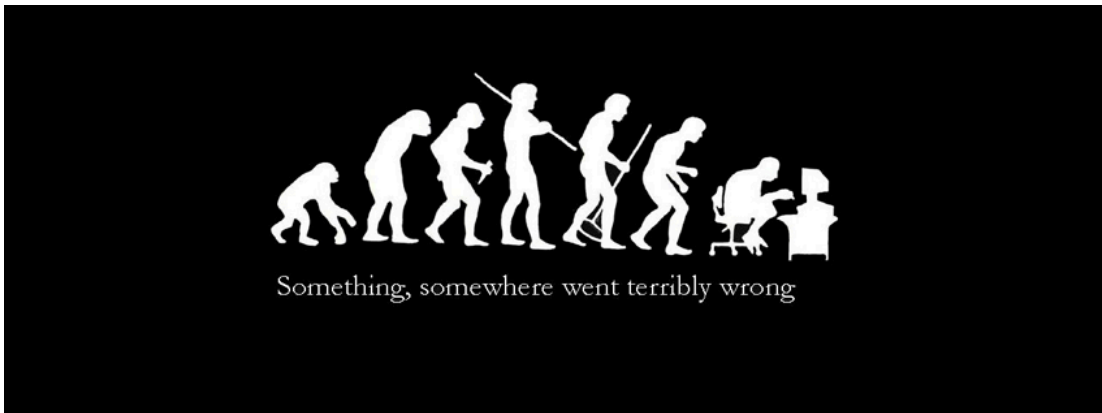
**Any advice you have for your fellow peers?**

Know that God is there to help you in any situation. Be strong and stay in school.

**Any shout outs?**

Shout out to my besties, Heta Pateta, Ekimagi, Deeh and especially to my family.





## Word Search – American Horror Story

C	A	I	L	E	D	R	O	C	B	N	R	F	W
T	R	P	O	E	M	I	S	T	Y	N	J	R	L
E	Y	T	O	Y	S	C	A	A	E	O	E	E	E
S	N	G	H	A	R	M	O	N	V	H	M	A	E
P	E	T	A	T	E	U	V	M	O	E	E	K	N
A	V	E	H	N	T	N	N	T	J	N	R	S	L
L	O	A	O	A	E	B	E	O	I	S	P	H	O
D	C	H	N	Z	P	L	I	E	M	K	U	O	N
I	B	S	U	K	N	T	V	V	M	A	S	W	M
N	K	E	G	Y	A	G	I	M	Y	K	I	T	E
G	T	R	N	L	V	R	V	E	N	Y	E	E	H
E	E	E	A	E	E	M	L	A	N	G	D	O	N
T	A	O	M	U	L	Y	S	A	E	T	S	A	I
V	A	R	T	E	P	V	A	P	Y	W	M	T	O

- TATE
- SPALDING
- CORDELIA
- AHS
- KIT
- JIMMY
- HOTEL
- SUPREME
- MISTY
- EVAN PETERS

- FREAK SHOW
- ASYLUM
- BEN
- LANGDON
- ZOE
- COVEN
- VIVIEN
- KYLE
- HARMON

## SUDOKU

	7			6				
9							4	1
		8		9			5	
	9			7				2
		3			8			
4			8					1
	8		3		9			
1	6							7
			5				8	

### Word of the day:

**Pejorative** *adj.* Expressing contempt or disapproval. Disparaging; belittling. "He used pejorative overtones in his speech."